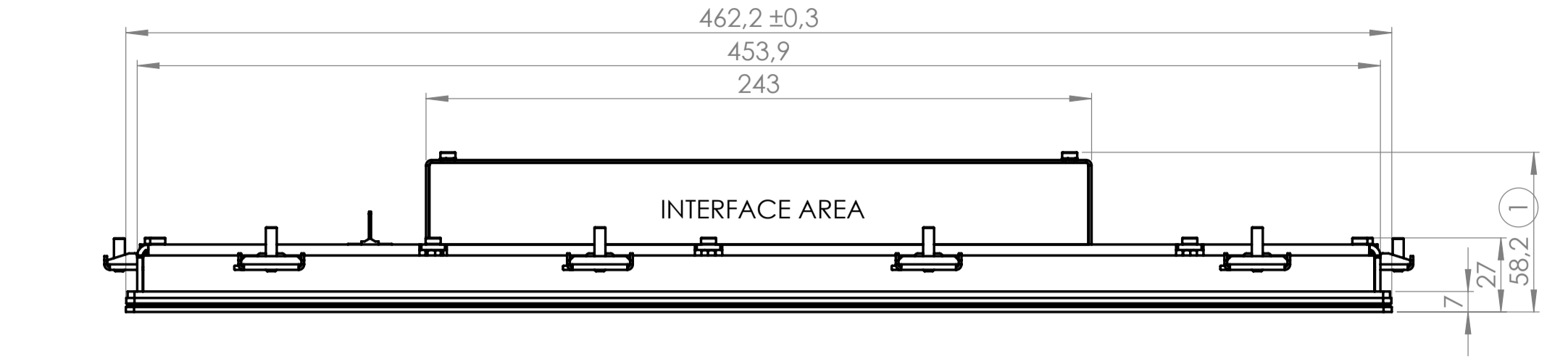
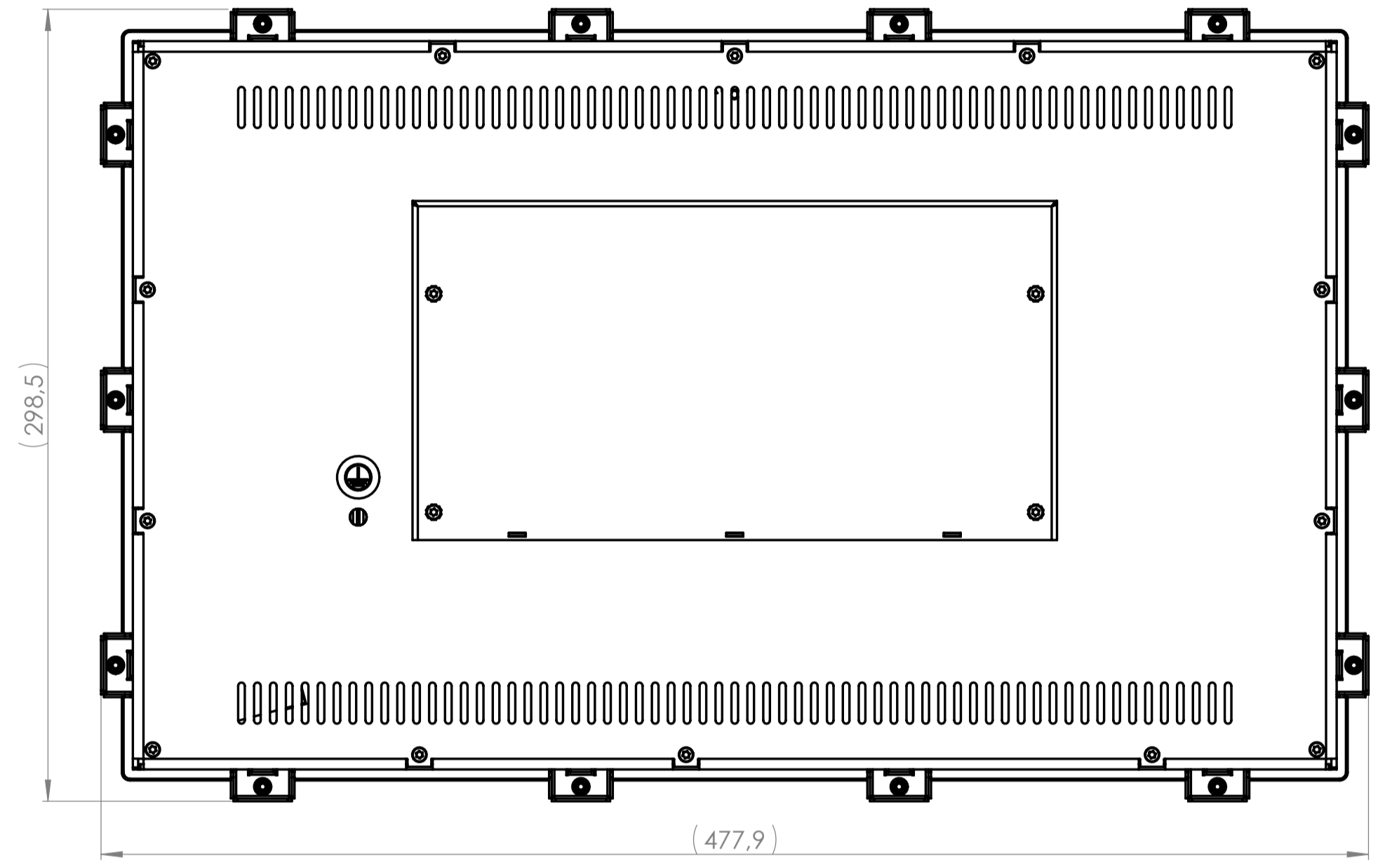


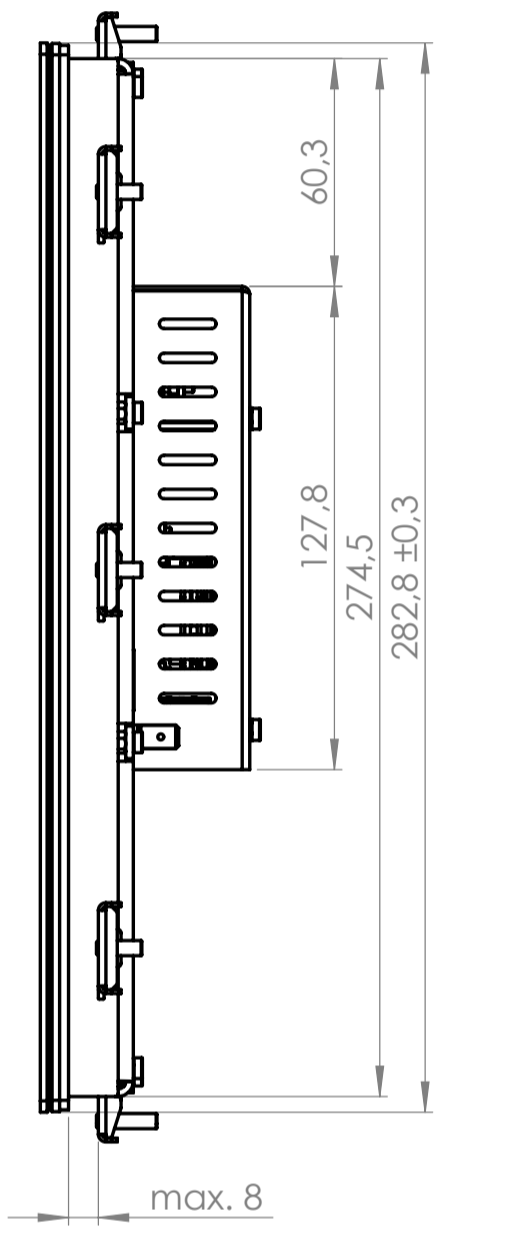
FRONT VIEW



BOTTOM VIEW



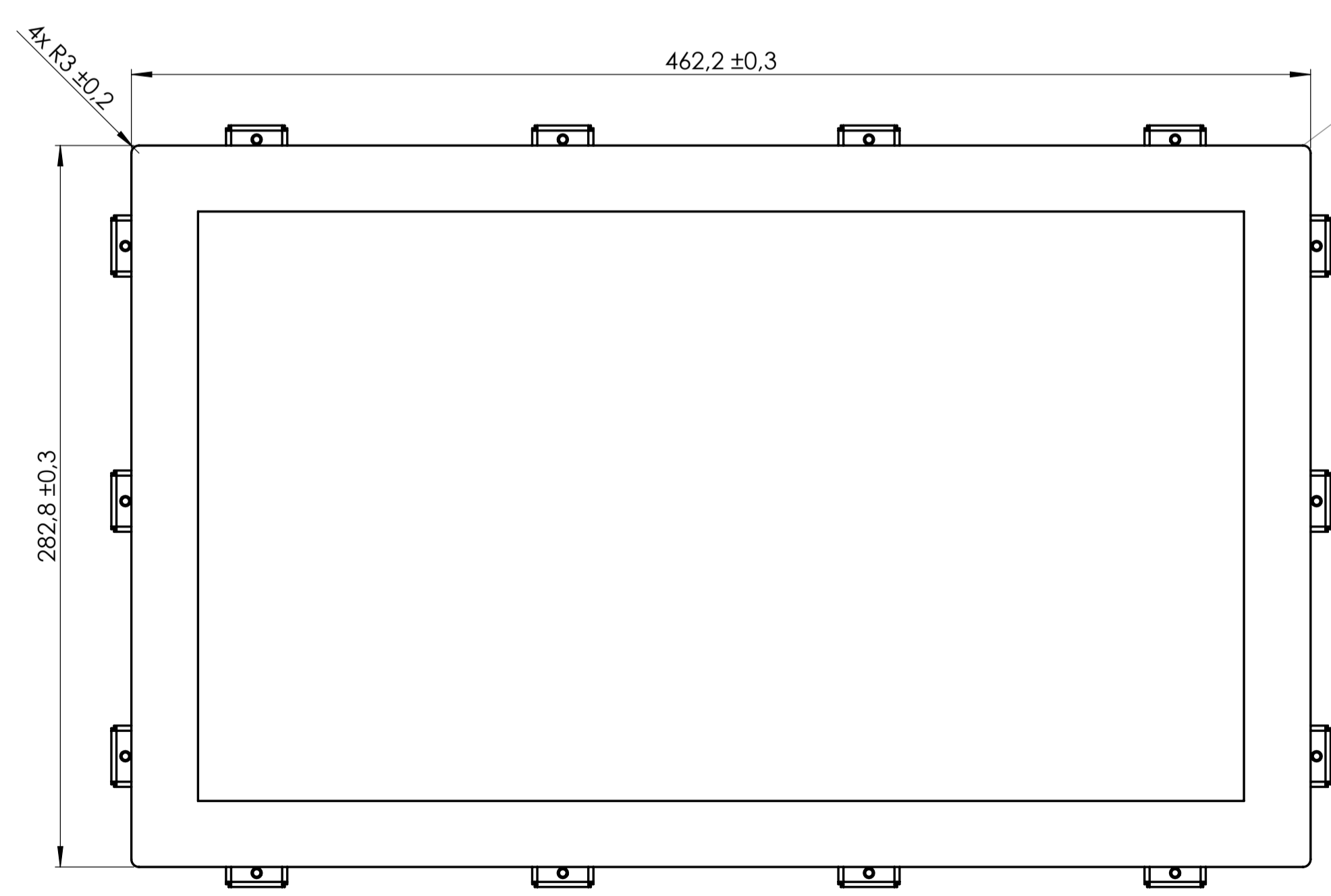
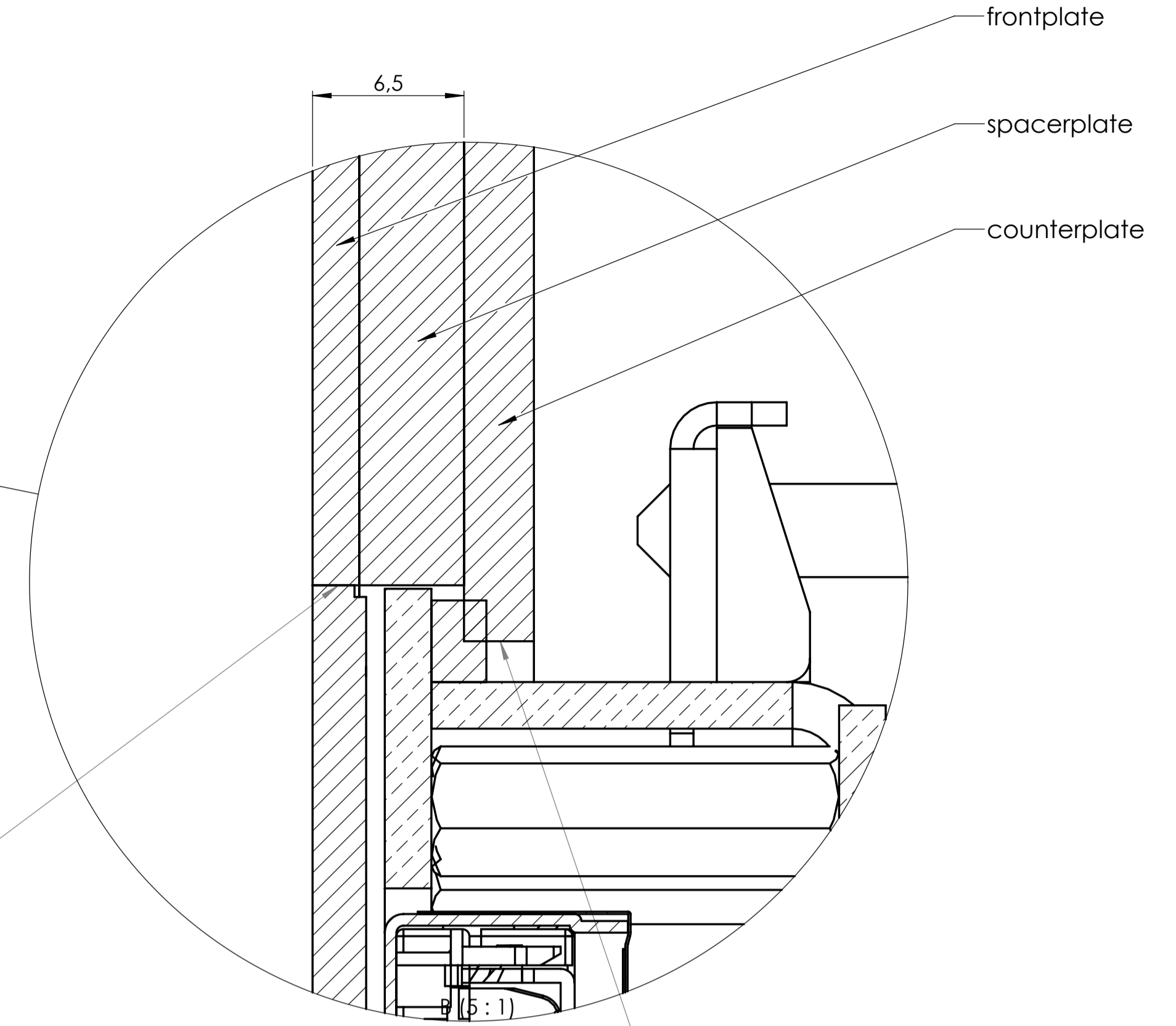
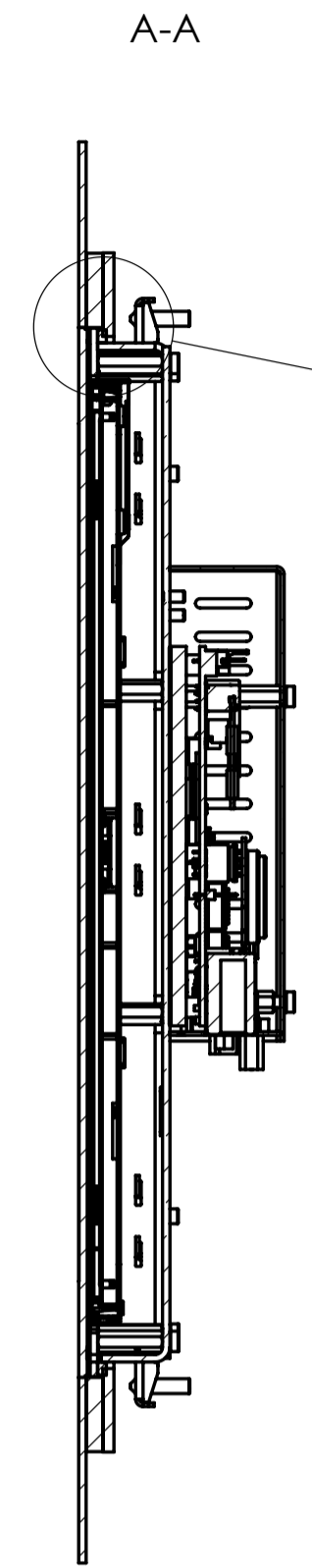
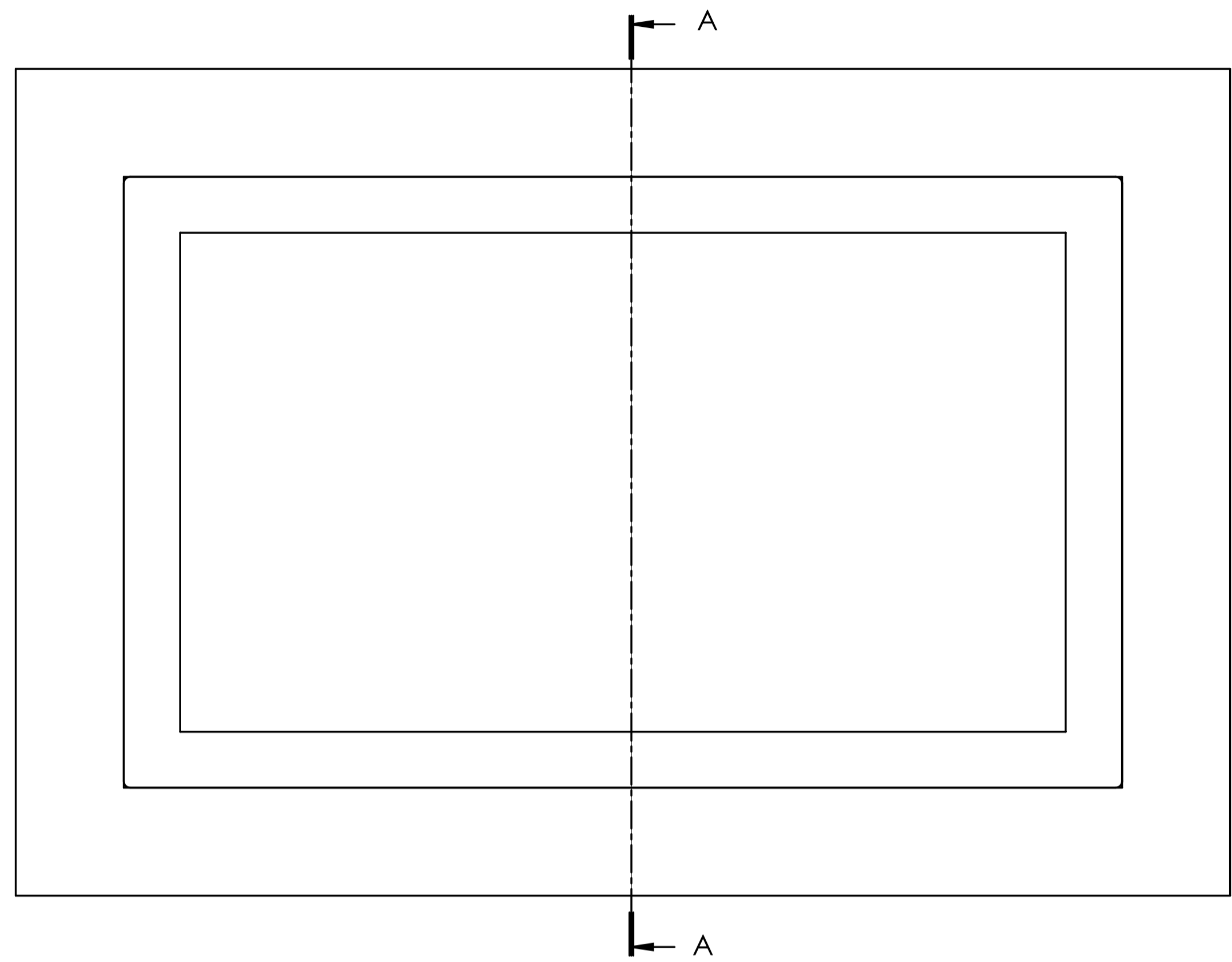
REAR VIEW



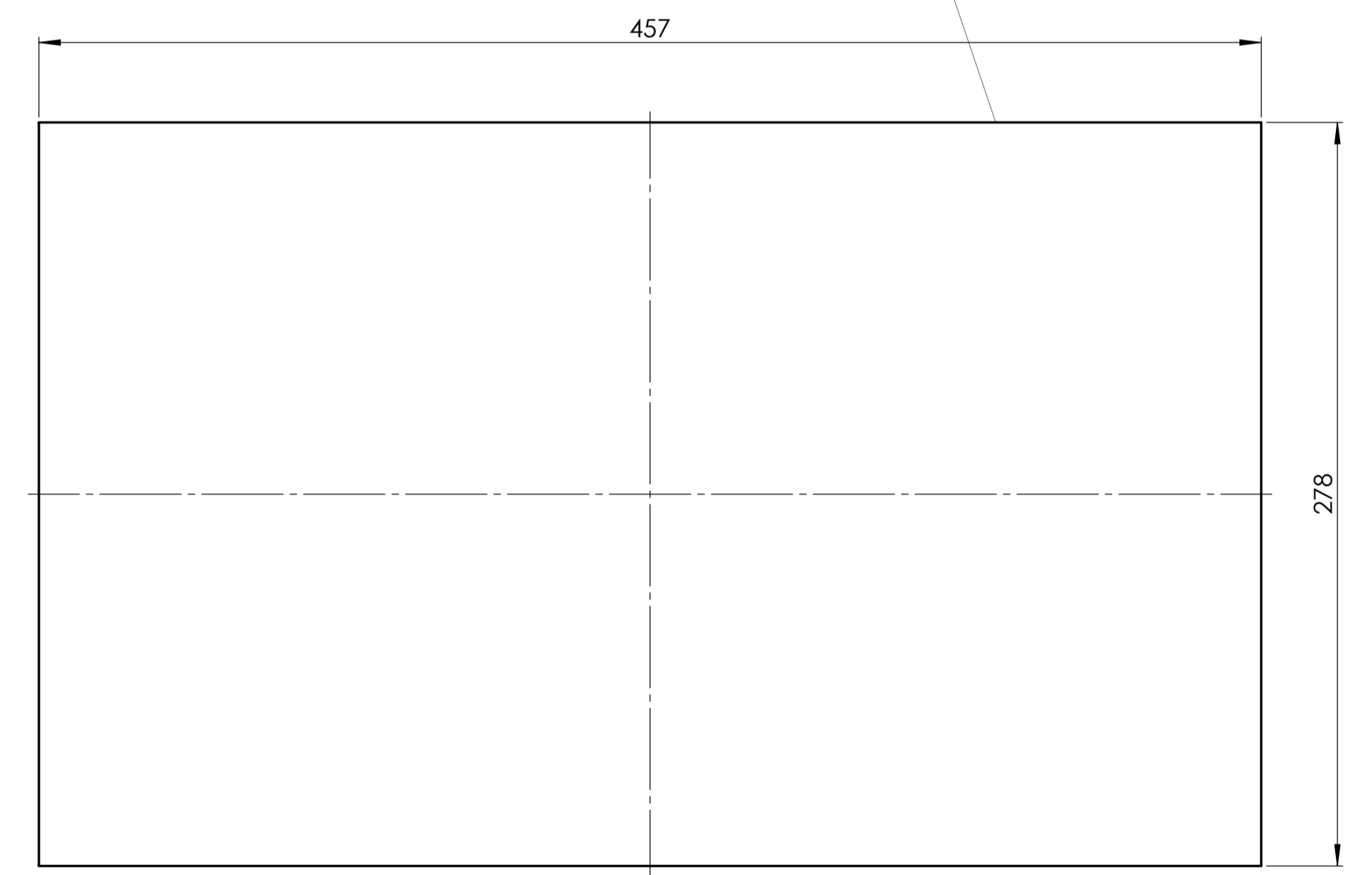
SIDE VIEW

Drawing for illustration of mechanical measurements only. For more details see datasheet.

General tolerances DIN ISO 2768-mK	Drawn by: PL	Material: Raw material:	Scale: 1:2
Document type: general arrangement drawing	Proved by: PL	Surface treatment	
	Release date: 2020-07-06	Touch-it Open Frame glass 18,5 Übersichtszeichnung	
Rev	Date	Name	Sheet: 1/2 A1
		Christ ELECTRONIC SYSTEMS	PA10006161
<small>Proprietary notice ISO 16016 to be considered</small>			



cut-out of front- and spacer-plate*



cut-out of counterplate

* The actual cut-out-dimensions of the front- and spacerplate need to be subject to the prevalent assembly situation (production tolerances, ambient temperature, etc.) and therefore to be defined by the customer.

General tolerances DIN ISO 2768-mK	Drawn by: PL	Material: Raw material:	Scale: 1:2
Document type: general arrangement drawing	Proved by: PL	Surface treatment	
	Release date: 2020-07-06	Touch-it Open Frame glass 18,5 Übersichtszeichnung	
		PA10006161	
Rev	Date	Name	Sheet: 2/2 A1
Proprietary notice ISO 16016 to be considered			