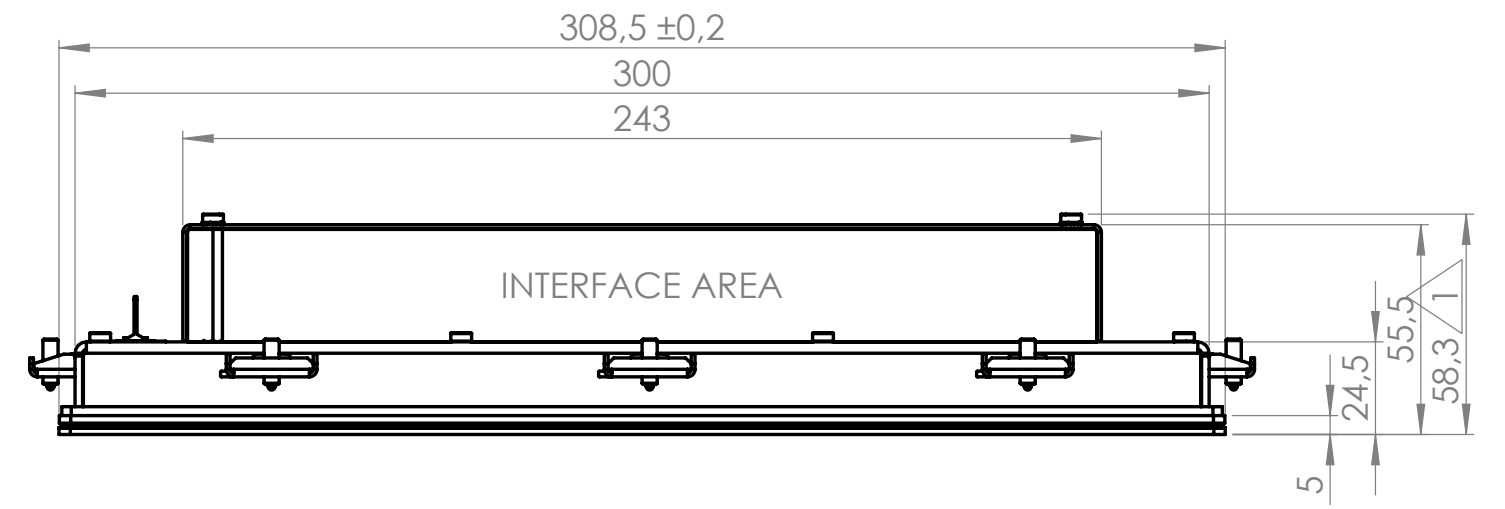
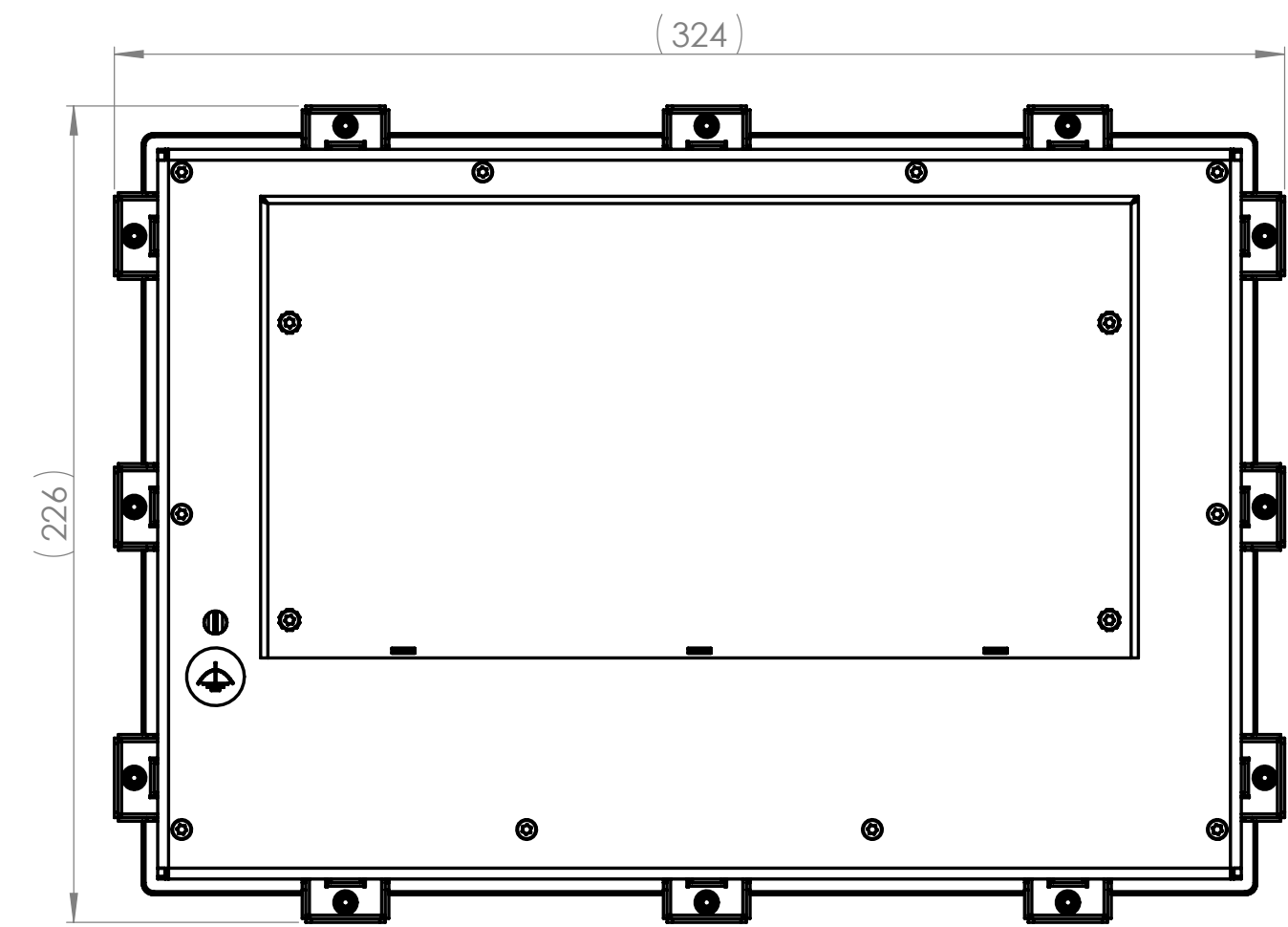


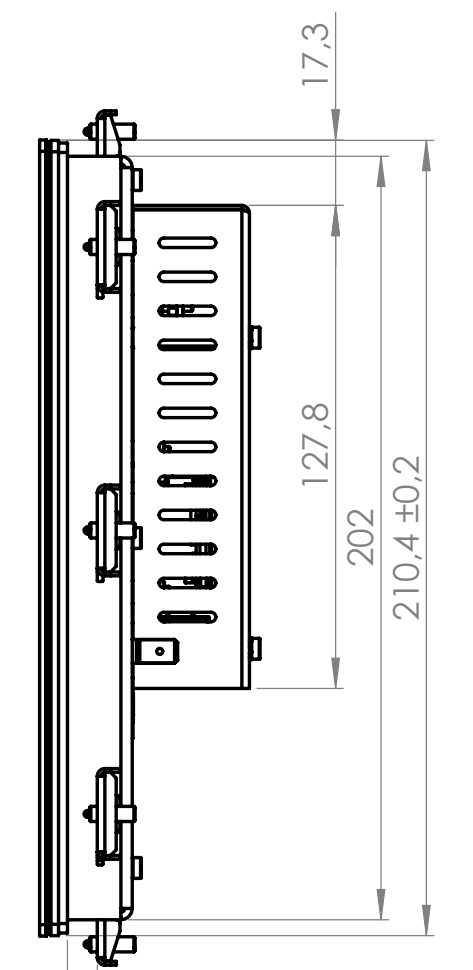
FRONT VIEW



BOTTOM VIEW



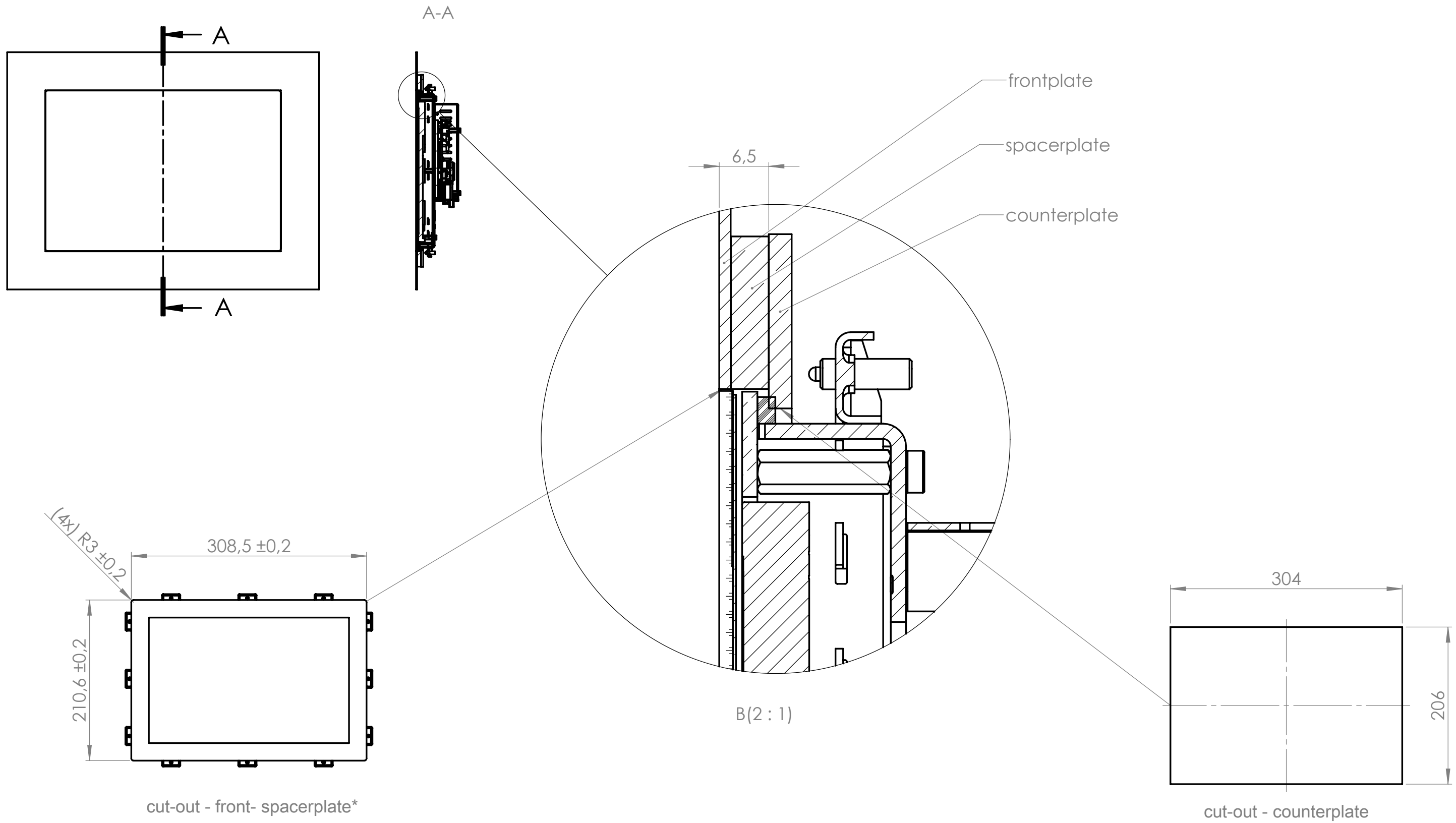
REAR VIEW



SIDE VIEW

Drawing for illustration of mechanical measurements only. For more details see datasheet.

General tolerances DIN ISO 2768-mK	Drawn by: PL	Material: Raw material:	
Document type: general arrangement drawing	Proved by: PL	Surface treatment:	Scale: 1:2
	Release date: 2020-07-06	Touch-it Open Frame glass 12,1 Übersichtszeichnung	
Rev.	Date	Name	Page: 1/2 A2
			PA10006158
Proprietary notice ISO 16016 to be considered			



cut-out - front- spacerplate\*

cut-out - counterplate

\* The actual cut-out-dimensions of the front- and spacerplate need to be subject to the prevalent assembly situation (production tolerances, ambient temperature, etc.) and therefore to be defined by the customer.

General tolerances DIN ISO 2768-mK			Drawn by: PL		Material:	
Document type: general arrangement drawing			Proved by: PL		Raw material:	
			Release date: 2020-07-06		Surface treatment:	
					Scale: 1:5	
					Touch-it Open Frame glass 12,1 Übersichtszeichnung	
Rev.	Date	Name	PA10006158			Page: 2/2
Proprietary notice ISO 16016 to be considered						A3