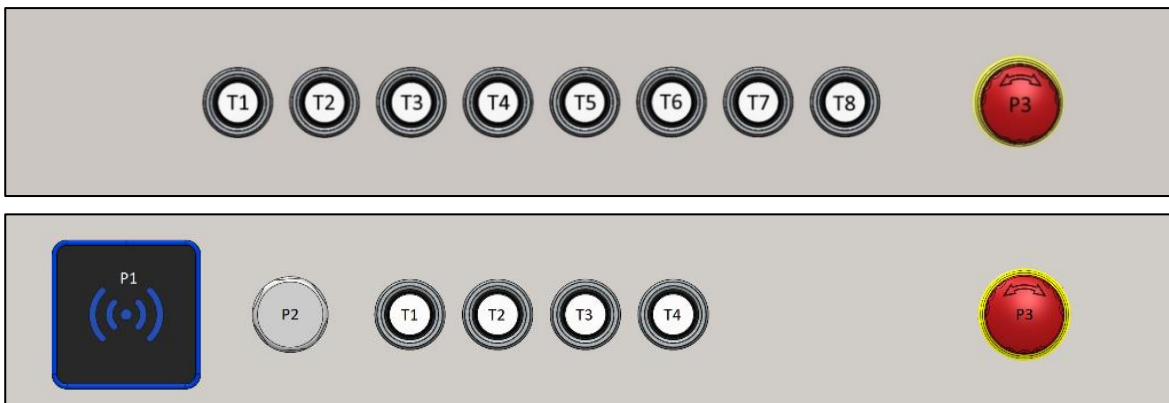


Product Series Hygienic


Configuration



1. Components

1.1 Position T

Each Push Button can be printed, see attached document.

Illustration	Control Element	Options
	Push Button (Designation Manufacturer: Membrane Pushbutton Head SVACFT) Change-Over Contact with tactile feedback IP69 Series: SHORTRON® base-plate mounting	Front Ring: Black, Red, Green, Blue * in the illustration, the front ring is shown in black


1.2 Position P1

Illustration	Control Element	Options
	RFID Reader TWN4 MULTITECH CORE C1 Manufacturer ELATEC IP69 Frequency response 125 kHz	- - - -


Product Series Hygienic

Configuration

1.3 Position P2

Illustration	Control Element	Options
	USB 2.0 Type A IP65 V2A Housing Stainless Steel	-----

1.4 Position P3

Illustration	Control Element	Options
	Emergency Stop for Hygienic RXUVP IP69 Series: QUARTRON®	Contact Element: 2 x normally closed / 2 x normally closed + 1 x normally open

2. Options

Standard	Push Buttons	Emergency Stop	RFID	USB 2.0
1	T1 – T8	P3	--	--
2	T1 – T4	P3	--	--
3	T1 – T4	P3	P1	P2
4	--	--	--	--
5	T1 – T4	--	--	P2

A custom-made version can also be ordered, in which case all components can be fitted individually.
See 4. Special Design

3. Configuration

Please talk to your contact person about the positioning of your company logo.

	PC	Monitor	Distance Monitor	18,5"	23,8" (on demand)	Free Positioning	Standard 1	Standard 2	Standard 3	Standard 4	Standard 5	Special Design
Type				-	-	---	---	---	---	---	---	---
Display	-----				---	---	---	---	---	---	---	---
Logo	-----				---							
Option	-----				---							

4. Special Design

Only fill in if a special design product is required.

Please talk to your contact person whether your special wishes can be implemented.

Push Buttons								Emergency Stop	RFID	USB 2.0
T1	T2	T3	T4	T5	T6	T7	T8	P3	P1	P2

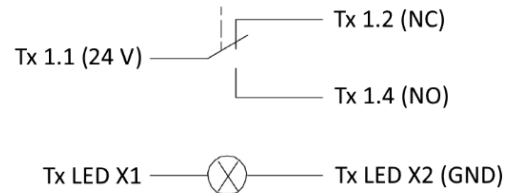
Product Series Hygienic

Configuration

5. Choice of Components

The number and position of the control elements depends on the decision made above: standard 1 - 5 or special design. Illuminated changeover contacts are always installed as switching elements (CO = change over).

	Membrane Pushbutton Head Change-Over Contact	Front Ring Black	Front Ring Red	Front Ring Green	Front Ring Blue	Identification Plate Enter number if requested
T1	CO					
T2	CO					
T3	CO					
T4	CO					
T5	CO					
T6	CO					
T7	NC NO					
T8	NC NO					



Ill.: Switching Element Change-Over Contact

* Note! With T7 and T8 only one contact can be queried:

NC = normally closed

NO = normally open

Switching element: 2 x NC

Switching element: 2 x NC + 1 x NO

	Yes	No
Profinet®		
EtherCAT®		
EtherNet/IP		

6. Confirmation

Please sign your decision and return the document.

Company:

Name:

Date:

Signature:

Disclaimer

Christ Electronic Systems GmbH reserves the right to change the information, designs and technical data contained in this documentation without prior notice, as the products are subject to constant further development. No guaran-tee is given that the data is complete, up-to-date and correct. In this document, all brand names as well as software and hardware designations used are subject to the respective companies, general trademark, brand or patent protection.

© Christ Electronic Systems GmbH

Contact

Christ Electronic Systems GmbH
Alpenstraße 34
87700 Memmingen

Phone:
+49 8331 8371-0 (Main Office)
+49 8331 8371-500 (Service)

Mail:
info@christ-es.de

Homepage:
<https://www.christ-es.com>

© Christ Electronic Systems GmbH