

IIoT STARTERKIT

EVALUATE DATA IN ONLY 15 MINUTES

IloT Starterkit

first steps into digitization made easy

The IloT Starter Kit helps machine and plant builders take their first steps towards the IloT. You don't have to invest in expensive system solutions right away. With our IloT Starter Kit, you can validate your individual requirements on a small scale. You don't have to be an expert in IloT for this. With its scope of services and simultaneous ease of use, our test package is suitable for beginners and advanced users.

IloT Starter Kit System Scope:

- Free trial system that you can use for 30 days
- Complete package: IloT gateway, cable, sensor, cloud access, configured software.
- Different test scenarios for beginners and IloT experts possible
- Fast and uncomplicated entry into the world of IloT
- Evaluation of data via a dashboard

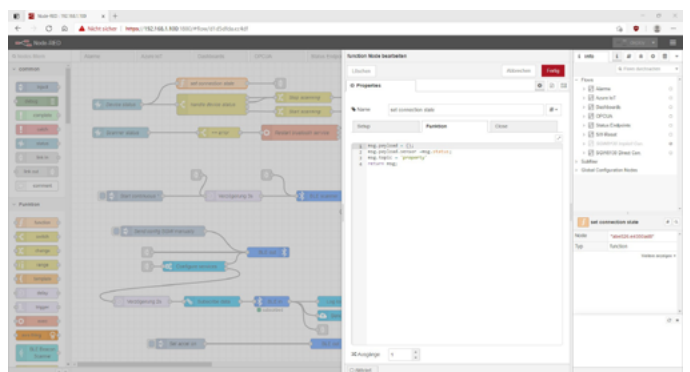
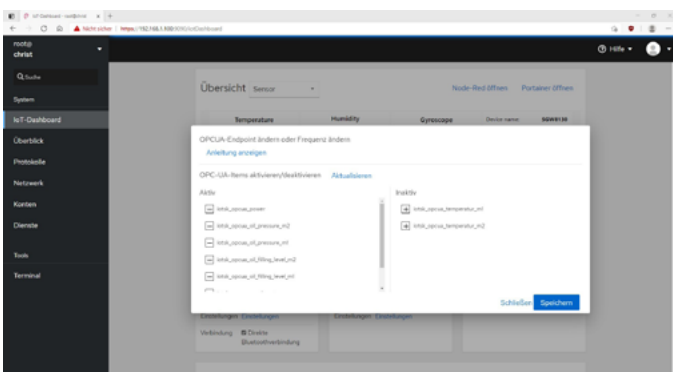
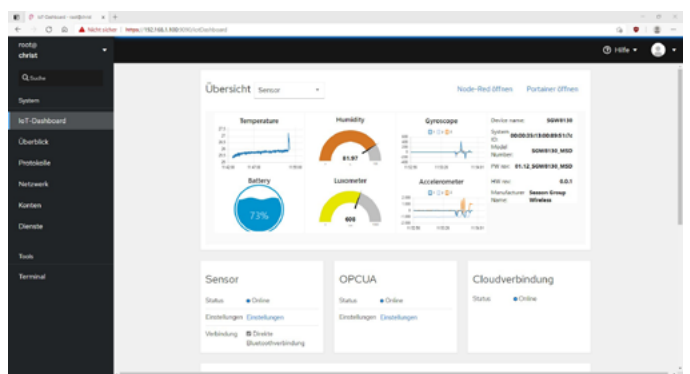
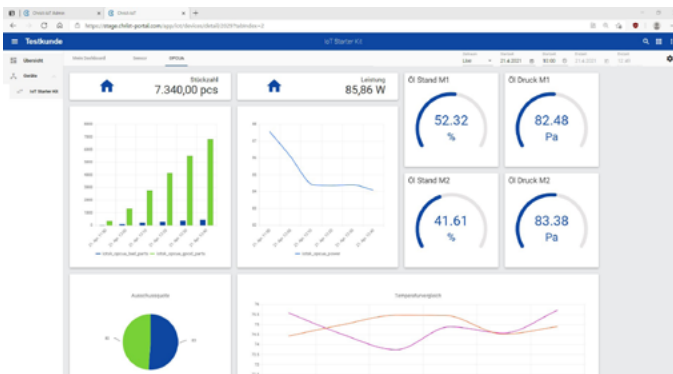
Data evaluation and simple configuration

With the help of the included sensor, you can document and analyze values such as temperature, humidity, brightness or acceleration via Bluetooth. The OPCUA simulation server provided in the package scope alternatively delivers simulated machine data. As a further option, you can connect your own OPCUA server to the gateway and define individual measured values.

With the help of Node-RED you can adjust the flows of data evaluation if necessary or create completely new flows.

You can adjust the device configuration of the gateway via the open source tool Cockpit. Here you can also check the device status.

An additional plugin monitors the connection status to the included IloT components. You can see data changes in real time via a local dashboard. With the help of the plugin, you can reset the box to factory settings with just one click.

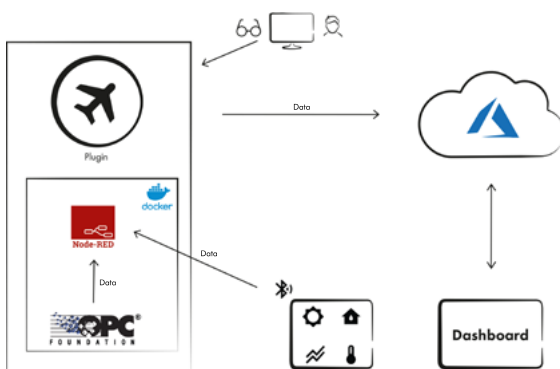


Technical features of the IIoT gateway:

- Linux Debian Operating System
- 2x Ethernet
- 2x USB Host 2.0, 1x USB Device 2.0
- 1x microUSB
- 1x RS232/485
- 9x IOs, 2x SMA Connector, 6x Status LEDs



| Advantages of the IIoT Starter Kit



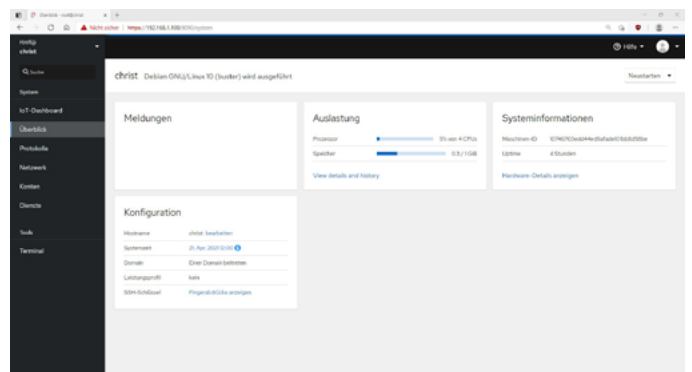
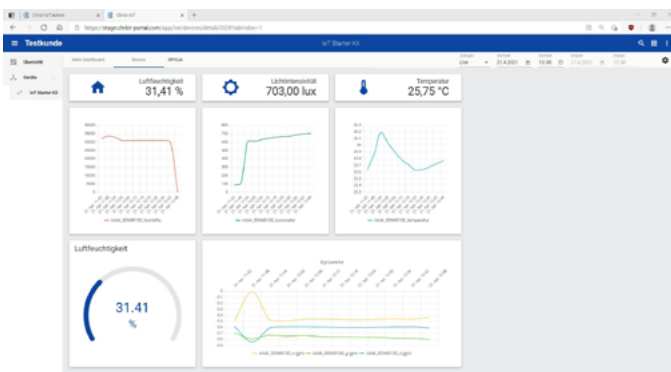
- Time saving
- Plug and Play - start without configuration effort (ready to use in 15 minutes)
- No hidden costs
- Free trial period
- User-friendly operation for beginners and advanced users, extensive configuration options can be used if required
- Data analysis via included standard sources or your data sources
- Individually customizable dashboard for optimal data analysis
- You get a deep insight into our IIoT competence without obligation

The IIoT Starter Kit offers the following application possibilities:

- Quick Start: in only 15 minutes you can evaluate the first data
- Create your individual dashboard with just a few clicks
- Modify the program code, e.g. to change the data processing
- Set the server from Simulation to your own OPCUA server. Read out your own variables and display the results in the cloud

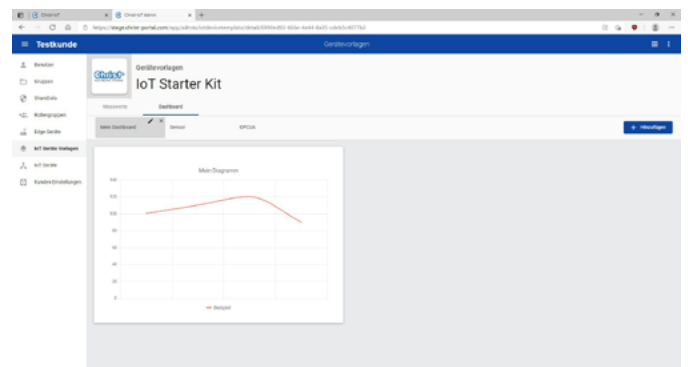
Try it out for yourself - request a test package now:

If you would like to get an idea of our IIoT Starter Kit yourself, order your personal test package. The package includes time-limited access to the portal in the cloud, an IIoT gateway, a sensor, cables and mounting materials, as well as instructions.



All information about the IIoT Starter Kit at a glance:

- Different test scenarios for beginners and IIoT experts possible
- Fast and uncomplicated entry into the world of IIoT
- Evaluation of data via a dashboard
- Quick Start: in only 15 minutes you can evaluate the first data
- Data analysis via supplied standard sources or your own data sources



All information about the IIoT Starter Kit can be found here:
www.christ-es.com/en/products/iiot/iiot-starterkit

